

- Input Power 100W AVG, 3kW Peak
- Frequency Range: 698 to 2900 MHz
- PIM < -160 dBc typ.
- Wide Temperature Range -40°C to +65°C

Specifications

Model	TLP100-A7
Frequency Range	698 - 2900 MHz
Power	100W avg. 3kW peak
Passive Intermodulation	<-160 dBc
Impedance	50 Ω
Return Loss	20 dB
Connectors	Male/Female DIN or N
Operating Temperature	-40°C to 65°C

The TLP100-A7 was designed and manufactured as a low PIM high power termination for use as a termination on Hybrids or Couplers. It is intended for broad frequency coverage and excellent return loss. One of the applications for this termination when connected to the mainline output of a directional coupler, is to use the coupled port of the coupler as a high power, low PIM, broadband flat attenuator.

Order Information

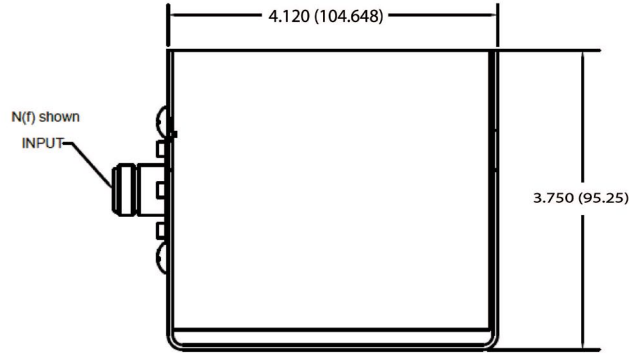
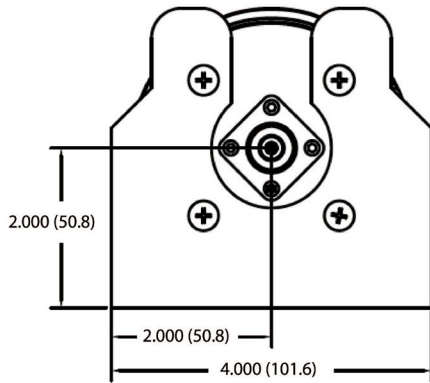
Type	Description
TLP100-A7DF	Low PIM Load 100W, Frequency 698 - 2900 MHz, PIM <- 160 dBc @2x43dBm (typ), Connector DIN 7/16 (f)
TLP100-A7NF	Low PIM Load 100W, Frequency 698 - 2900 MHz, PIM <- 160 dBc @2x43dBm (typ), Connector N (f)

Specifications subject to change without further notification

RF & Microwave Technology
 AWT-Global provides advanced telecommunication technology products and analyzers for a variety of RF and Microwave applications.

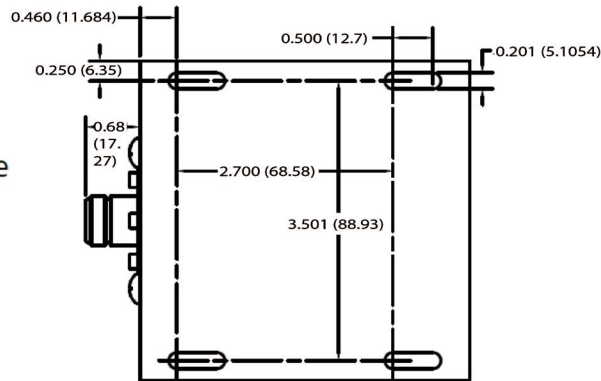
AWT Global
 117 Grand Avenue
 Hackettstown
 New Jersey 07840, USA
 p: +1 (973) 321-3423
 e: sales@awt-global.com
 w: www.awt-global.com

Dimensions



(shown with Type N connector)

specify N or DIN Connector, male, female



Dimensions in Inches (mm)

Product Quality

AWT Global's products are designed to meet the highest quality standards to fulfill the strongest PIM requirements. Every individual product is tested for performance to ensure that AWT Global's customers receive the highest quality products

AWT Global
117 Grand Avenue
Hackettstown
New Jersey 07840, USA
p: +1 (973) 321-3423
e: sales@awt-global.com
w: www.awt-global.com